

The EP2020xS and its companion I/O board create a compact, cost-effective, and powerful platform for developing high performance networked control platforms. At only 3.5" x 2.2" x 1.5", the board stack will fit into compact spaces, while 13 serial ports, 2 USB ports, and 2 Gigabit Ethernet ports provide the necessary control I/O.

Designed for fanless operation from -40 to +85 degrees centigrade.

At the heart of the EP2020xS is the Freescale QorIQ P2020. The P2020 is a highly integrated SoC that includes two e500 cores at speeds up to 1.2GHz, dual floating point units, NAND flash controller, DDR2 RAM controller, USB 2.0 host and device controllers, and dual Gigabit Ethernet MACs. The high level of integration increases performance, while lowering system power consumption and cost.

The board stack is supported by the U-Boot bootloader and BSPs for Linux, VxWorks, and Green Hills INTEGRITY.

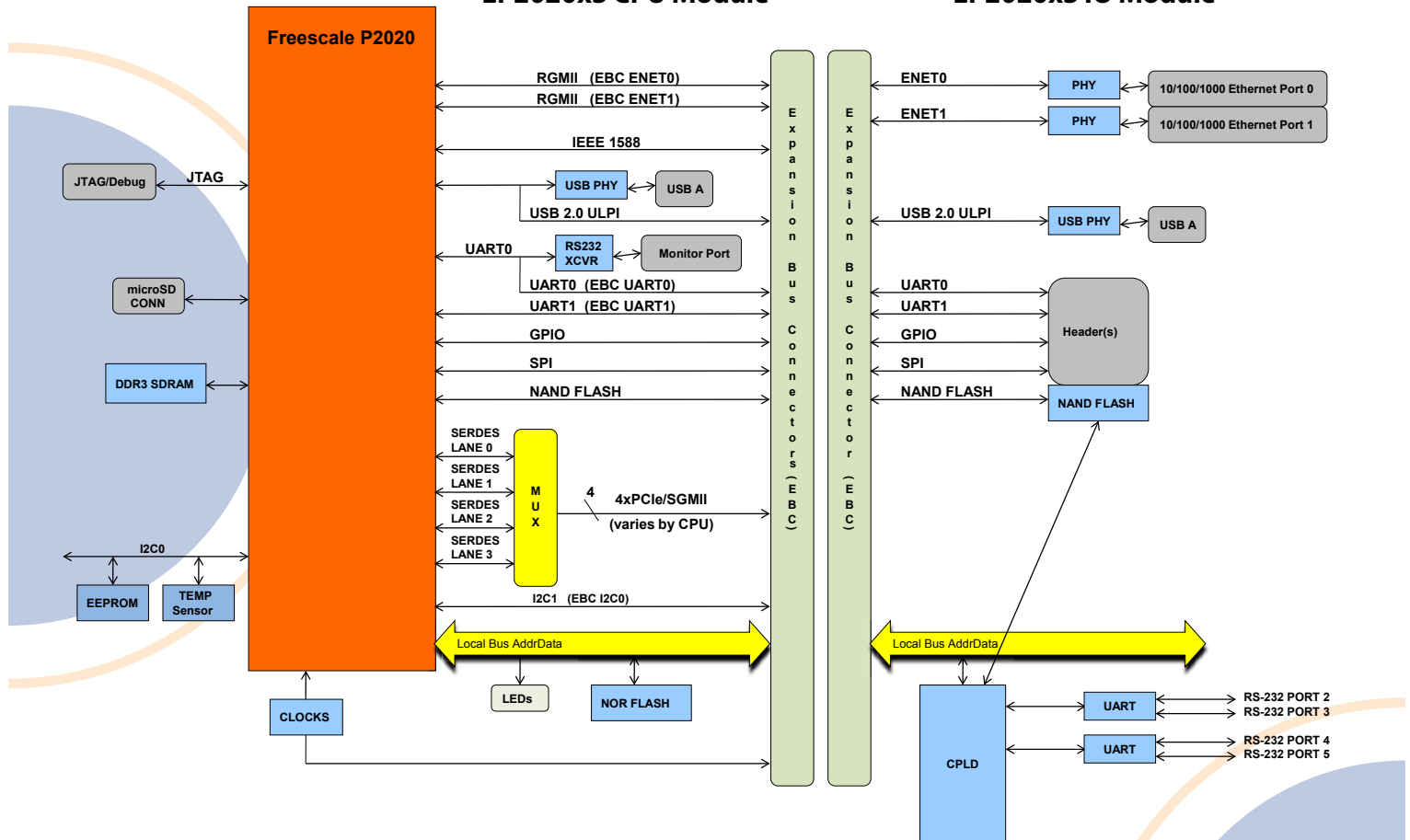
Feature Summary:

Specification:	Description:
Processor:	Freescale P2020 at up to 1.2GHz
Memory:	RAM: Up to 256MB DDR3 FLASH: Up to 128MB, with additional 512MB NAND flash via I/O board
Ethernet:	2 Gigabit ports via I/O board
Serial Ports:	1 RS-232 on board with additional 12 ports available via optional I/O board
USB:	USB 2.0 Host and Device ports via I/O board
I2C Devices:	EEPROM and Battery Backed Real Time Clock
Form Factor:	Fanless Credit Card size (3.5" x 2.2"), 1.5" high when stacked
Debug:	On board JTAG debug connector

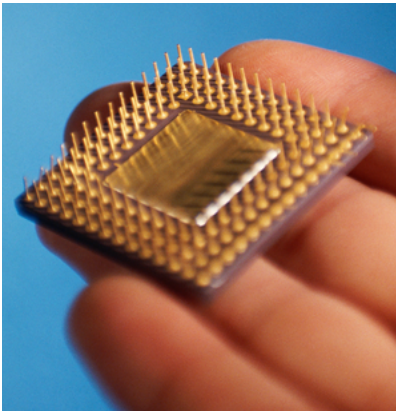
Hardware Block Diagram

EP2020xS CPU Module

EP2020xS IO Module



Let Us Do The Heavy Lifting



- Embedded Planet offers a complete set of software and hardware services to go along with our Off-the-Shelf solutions.
- Embedded Planet has extensive experience with embedded operating systems and firmware. Our stock configurations of operating systems and firmware can be customized to meet your particular needs.
- We can alleviate the headaches associated with volume production of embedded systems. Your product is delivered 100% tested from an ISO-9002 certified manufacturing facility.
- Our capabilities are available on a project basis to design custom solutions specifically tailored to your application.
- Contact Embedded Planet to find out how we can accelerate your project.