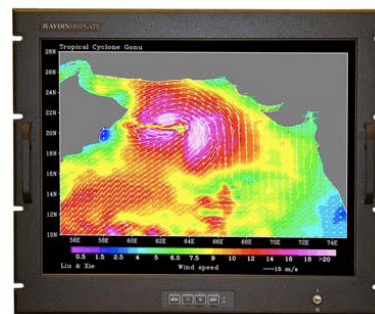


RUGGED/COTS SERIES

SPECIFICALLY DESIGNED FOR SEVERE ENVIRONMENTS

- 20.1" COLOR ACTIVE MATRIX LIQUID CRYSTAL DISPLAY (AMLCD)
- HIGH RESOLUTION 1600 x 1200
- ATTRACTIVE FLUSH RACK MOUNT
- CONVENIENT FRONT CONTROLS
- DESIGNED AND BUILT TO MILITARY STANDARDS
- ANTI-REFLECTIVE PROTECTIVE WINDOW (STANDARD)
- VIEWING ANGLE $\pm 88^\circ$ (TYPICAL ALL DIRECTIONS)
- HD-15 (VGA) OR 5-BNC (VGA), DVI-D
- OPTIONAL- NTSC (1 BNC), S-VIDEO (S-VIDEO CONNECTOR)
- INTERNAL AC OR DC POWER SUPPLY
- FLICKER COMPENSATION FOR DISPLAY OF SONAR ACOUSTIC DATA (OPTIONAL)



Specifications

Display Type:	20.1" TFT Active Matrix LCD
Active Display Area:	408 x 306 mm (16.06" x 12.05")
Pixel Pitch:	0.255 x 0.255 mm
Brightness:	255 cd/m2 (Typical) Full Dimming 0-100%
Viewing Angle:	$\pm 88^\circ$ All directions (Typical)
Contrast Ratio:	350:1 (Typical)
Response Time:	16 ms (Typical)
Display Colors:	16 Million
Synchronization Range:	Horizontal: 24 to 82 kHz Vertical: 55 to 85 Hz
Input Signal:	Video: Analog 0.7V p-p/75 Ω Sync: Separate sync. TTL level Horizontal Sync Positive/Negative Vertical Sync Positive/Negative Composite Sync Positive/Negative Sync on Green (Video 0.7Vp-p and Sync 0.3Vp-p)
Input Interface:	HD15F (VGA) or 5 BNC (VGA), DVI-D
Video Input Impedance:	75 Ohms
Resolutions Supported:	640 x 480 @ 60-85 Hz 720 x 400 VGA Text 800 x 600 @ 56-85 Hz 832 x 624 @ 75 Hz 1024 x 768 @ 60-85 Hz 1152 x 900 @ 75 Hz 1280 x 1024 @ 60-85 Hz
Native Resolution:	1600 x 1200 @ 60 Hz
Display Controls:	Power, Brightness, Contrast, Horizontal Width, Horizontal Phase, Horizontal & Vertical Position

Aydin Displays' model 4520R4C flat panel display is designed for use in severe environments as encountered by the military. The 4520R4C is designed to meet a wide variety of applications (airborne and ground mobile), which requires a solid mechanical design to protect the display against shock, vibration and temperature extremes.

The model 4520R4C's salient features are:
15.75" (9U) high and is designed for flush mounting into a standard 19" RETMA rack enclosure.

Environmental

Temperature:	Operating: 0°C to 50°C, MIL-STD810E (Sea Level) Storage: -20°C to +60°C, MIL-STD-810E, Method 501.3/502.3, Procedure I Optional: -40°C storage available
Humidity:	Operating/Storage: 5 to 95% RH Non-condensing MIL-STD-810E, Method 507.3 Procedure 1
Altitude:	Operating: 0 to 42,000 ft. above sea level Storage: 0 to 54,000 ft. above sea level (MIL-STD-810E, Method 500.3)
Rapid Decompression:	RTCA/DO-160D, 8,000 ft ASL to 42,000 ft. ASL in 15 seconds, 42,000 ft. ASL to 25,000 ft ASL in 5 minutes
Shock:	Operational: 30G, 11ms, 1/2 Sine Crash Safety: 40G, 11ms, 1/2 Sine
Vibration:	MIL-STD-810E, Method 514.4, Category 8, Ground Mobile / MIL-STD-810F, Method 514.5 Category 13, Propeller Aircraft
EMI:	MIL-STD-461E RE102, RS103, CS101, CE102, CS114
Power Requirements (AC Input):	Power Supply: Internal 100- 120V/220-240 VAC Frequency: 50-60, 400 Hz Power: 85 Watts Chassis Connector: MS3102E10SL-3P
Power Requirements (DC Input):	Power Supply: Internal 28 VDC MIL-STD-704F Power: 85 Watts Chassis Connector: MS3470L8-33P
Dimensions & Weight:	Rack Mount Height: 15.72" (9U) Width: 19.00" Depth: 4.16" (not including connectors) Weight: 25 lbs.
Remote Control:	RS-232 Interface for Remote Video Input Selection and Display Adjustments
Compatibility:	PCs, Workstations, & X-Terminals
Options:	Sunlight Readable, Night Vision Goggles Compatible, Capacitive Touchscreen, Flicker Compensation for Display of Sonar Acoustic Data, Picture-in-Picture, NTSC (1 BNC), S-Video (S-Video Connector)

AYDIN DISPLAYS

1 RIGA LANE BIRDSBORO PA 19508 USA

PHONE: 610-404-7400 FAX: 610-404-8190

TOLL FREE: 866-367-2934

WWW.AYDINDISPLAYS.COM

Aydin Displays is:

